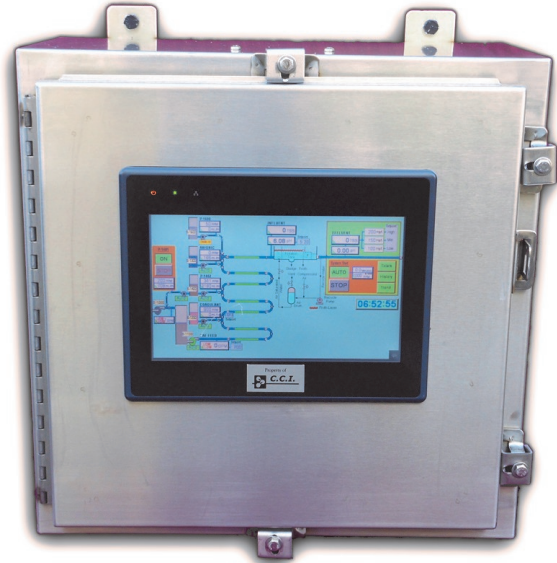




# The Future of Wastewater Treatment Control

**AF-3**



Touch Screen Control

**Enables management to set the effluent parameters based on necessary water quality.**

**Eliminates chemical over-dose and under-dose events.**

**Adjusts up to 5 chemicals every 57 seconds based on quantity of water flow and programmed effluent parameter set-points.**

**Automatic self cleaning of probes to maintain accuracy.**

**Stores and graphs data which is accessible through intranet connection.**

**Frees up operator time to perform other important maintenance tasks.**

**Operates 24 hours a day, 7 days a week, never gets sick or takes a vacation.**



Accelerate your company's potential with CCI Chemical products

Contact CCI for more information [www.ccichemical.com](http://www.ccichemical.com) Ph: 800-767-9112